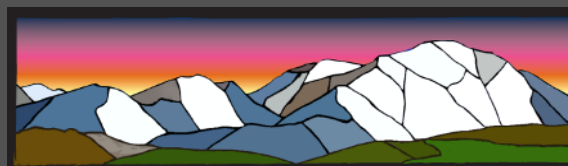


W.I.L.D. About Denali

Wilderness Intensive Learning Development

Contact:

Kimber Burrows
Program Director
Denali Education Center
P.O. Box 212
Denali Park, AK 99755
Tel: (907) 683-2597 Fax: 888-325-1938
kimber@denali.org



DENALI EDUCATION CENTER

<http://www.denali.org/>

What is W.I.L.D. about Denali?

W.I.L.D. about Denali is a program in partnership with several Alaska social service agencies and is designed for at-risk youth and developmentally challenged youth and adults. Activities cultivate personal growth and encourage full participation in society through wilderness experiences in Denali National Park and Preserve. The program occurs over a three-day, two-night camping trip at Savage Campground and involves interpreted hikes focusing on ecology and wilderness stewardship, campground activities centered around teambuilding and self-confidence, and a whitewater rafting trip on the Nenana.

Program Mission: To provide opportunities for youth to experience and develop respect, self-confidence and team building through the wilderness of Denali National Park and Preserve.

Goals and Objectives:

- 1) Respect learned from wilderness will translate into respect for oneself, other people and everyday surroundings.**
 - a) Youth will discover sense of self.
 - b) Youth will enhance their awareness of wilderness.
 - c) Youth will learn to value others.
- 2) Self-confidence gained from learning basic backcountry skills will enable youth to make more informed decisions, thus enhancing self-esteem.**
 - a) Staff will implement positive reinforcement.
 - b) Staff will teach basic backcountry safety to youth.
 - c) Staff will encourage active participation in all activities.
- 3) Participants will learn team-building skills through interaction with other participants and with staff.**
 - a) Staff will demonstrate active role modeling.
 - b) Youth will practice social skills.
 - c) Youth and staff will examine problem solving.

Who are the W.I.L.D. partners?

Denali Education Center, Denali National Park and Preserve, Denali Outdoor Center, Old Sourdough Studios, Fairbanks Community Mental Health Association, Family Centered Services of Alaska, and Fairbanks Resource Agency.

Who is eligible for the W.I.L.D. program?

The Denali Education Center partners with cooperating social service agencies and other organizations catering to youth of Alaska, especially those that seek to empower youth through wilderness experiences. Each cooperating agency is responsible to determine which clients are eligible for the WILD experience according to the agencies' own guidelines.

What do the cooperating agencies provide?

- Transportation for all participants to and from Denali and at all times throughout program.
- Staffing: Two or more counselors per group based on a **maximum of twelve participants**.
- Personal camping gear: sleeping bags, sleeping pads, clothing and extra shoes, day pack, reusable water bottle etc. The Denali Education Center does have a limited number of sleeping bags and pads to supplement those who do not have personal gear.

What does the Denali Education Center provide?

- Staffing: One leader per group. An additional counselor may be available by special arrangement.
- Food for the entire group.
- Campground reservations for the group.
- Group rafting trip on the Nenana River (weather permitting).
- Group camping equipment; tents, stoves, cooking gear, etc.
- Complimentary group rafting photo provided by Old Sourdough Studios.

What is the cost per participant?

The cost of the WILD program is \$300 per participant. This includes all food, campground reservations, and rafting fees. There is a \$225 charge for counselors from participating agencies. For those students fundraising for their participant fee, we do have scholarship funds available annually.

Program Deposit and Cancellation Policy:

The Denali Education Center requires a refundable program deposit of \$300. This deposit is due at the time of registration; the remaining balance is due upon arrival.

The deposit is necessary to cover costs that are incurred in preparation for each trip. It is for these reasons and others that we require a deposit and have implemented the following cancellation policy:

- Cancel 3 weeks prior to start date..... Full refund (of program deposit)
 - Cancel 2 weeks prior to start date.....75% refund
 - Cancel 1 week prior to start date.....50% refund
- Cancellations that occur within a week of the program will receive **no refund**.*

Denali Education Center Staff's Role

To engage youth with the wilderness of Denali through positive learning experiences. The role of our field staff is to coordinate the logistics of the week and lead the campout activities in a manner that encourages teamwork and self-reliance.

The following list indicates the responsibilities of the Denali Education Center Staff:

- Facilitate camp set up and break down
- Instruct cooking and meal time preparations
- Coordinate the time schedule and logistics of daily activities
- Lead hikes and campout activities

Agency Staff's Role

Because the primary role of the Denali Education Center staff is to guide the campout aspect of the program and coordinate logistics, it is important for the agency staff to manage the children's interactions and help encourage a positive experience for all. Any agency staff that accompanies the participants on the *W.I.L.D.* trip is expected to fulfill the role of disciplinarian and to take the lead in managing appropriate behavior in this group-oriented scenario.

The list below further describes our expectations of the accompanying staff:

- Clients must be supervised by agency staff members at all times, bathroom trips, filling water jugs, etc. All kids must be in sight and sound distance.
- Manage discipline and behavior of participants
- Assist in motivating the participants to help with camp chores (meal preparations, camp set up and break down, dishwashing, etc.)

Sample Itineraries W.I.L.D. about Denali

The Denali Education Center is flexible and interested in working with cooperating agencies to construct appropriate and relevant itineraries that address the agency's specific needs.

Location: Savage River Campground

Tuesday

12:00 PM Group leaves Fairbanks/Anchorage with bagged lunches
 2:30 PM Group arrives at Savage Campground for orientation
 3:30 PM Set up tents
 4:00 PM Hike
 6:00 PM Dinner
 7:30 PM Hike, group games or presentation

Wednesday

8:00 AM Wake up, eat breakfast & pack lunches
 10:00 AM Hike Horseshoe Lake, or Mt. Healy Overlook
 12:45 PM Lunch at Riley Creek Mercantile
 2:00 PM Drive to Denali Outdoor Center for rafting the canyon
 4:30 PM Raft take-out at D.O.C.
 5:00 PM Watch movie at Visitor's Center, back to campground
 6:00 PM Dinner
 7:30 PM Group games or presentation

Thursday

8:30 AM Wake up, eat breakfast, & pack lunches
 9:30 AM Break camp and pack van
 10:45 AM Visit Park Kennels
 11:30 AM Gear clean-up at Denali Education Center
 12:00 PM Closing Circle and Goodbyes
 12:15 PM Depart for Fairbanks with lunches

Location: Wonder Lake Campground

Tuesday

12:30 pm Group meets at DEC Sheldon Center for orientation
 2:05 pm Depart Riley Creek Loop for Wonder Lake
 7:15 pm Arrive at Wonder Lake
 7:30 pm Set up camp, Dinner, Pack lunches

Wednesday

7:00 am Breakfast
 9:00 am Hike Quigley Ridge
 12:30 pm Lunch on the Trail
 4:00 pm Afternoon Activity
 6:30 pm Dinner
 7:30 pm Group games or presentation

Thursday

8:30 am Breakfast
 10:30 am Morning activity
 12:00 pm Lunch
 1:00 pm Hike on McKinley Bar Trail
 6:30 pm Dinner
 7:30 pm Ranger presentation

Friday

8:00 am Depart Wonder Lake
 1:50 pm Arrive at MSLC bus loop
 2:15 pm Clean up at Denali Education Center
 3:00 pm Closing Circle and Departure

Note: This itinerary is based on previous trips with groups of 6 participants aged 8-16.





"Inspiring Personal Connections to Denali"

Our Mission: To foster understanding and appreciation of Denali through informative and inspiring programs.

Facilities: The Denali Education Center's 90-seat lecture hall and offices are located in the *Charles Sheldon Center*, named in honor of the founder of Denali National Park. The Charles Sheldon Center was built with over 4,000 hours of volunteer effort and features post and beam log construction, an 18-foot stained glass mural of the Alaska Range, and an intricate tile mosaic of Denali. The Denali Education Center also operates a residential campus housing programs on the banks of the Nenana River just outside of Denali National Park and Preserve.

Our current programs:

WILD About Denali: Partnering with social service agencies, the Wilderness Intensive Learning Development (WILD) program for at-risk youth and developmentally challenged youth and adults fosters personal growth during a wilderness experience in Denali National Park and Preserve. WILD's goals focus on developing self-confidence, teamwork skills, and respect for self, others and wilderness. Camping, rafting and hiking in Denali are powerful tools used to impact the participants. WILD About Denali serves up to 80 participants each summer.

Denali Discovery Camp: Partnering with the National Park Service (NPS) through the Murie Science and Learning Center (MSLC) and the Denali Borough Community, this weeklong day camp for first through eighth-graders provides an opportunity to discover Denali's important and diverse resources. Days filled with excursions to different locations within the park connect this vast wilderness and its future caretakers. Up to 36 kids participate in Denali Discovery Camp each summer.

Denali Backcountry Adventures: Designed specifically for high school students, this program is a follow-up to Denali Discovery Camp. Participants travel into the backcountry wilderness of Denali National Park for three nights to gather information for use by Denali Park researchers monitoring soundscapes, wildlife frequency and ecological impacts.

Road Scholar (Elderhostel): An adventure in lifelong learning for participants in their 50's and beyond. A variety of programs throughout the year bring people together from around the world to study Denali's wildlife and natural history while exploring the balance between preservation and use in this unique subarctic wilderness. Denali Education Center Road Scholar programs reach up to 800 people each summer.

Denali Community Series: An open forum for cultural and natural history, current research, NPS Artists-in-Residence, community interest, classes, art and music. Events are hosted throughout the summer in the Denali Education Center's Charles Sheldon Center and at the McKinley Park Community Center during the winter months. This popular series serves approximately 5000 people each year. Check out our current events on our online Community Calendar.

Discover Denali: Discover Denali operates from the National Park Service's Murie Science and Learning Center. A short lecture is followed by a guided walk in the Park through boreal forest and alongside a subarctic creek. This program helps visitors understand and appreciate the complex relationships between the living and non-living components of the Denali ecosystem.

Discover Denali Research Fellowship: The Discover Denali Research Fellowship encourages scientific research that addresses management issues in Denali National Park and Preserve. Proceeds from the Discover Denali program fund the fellowship for students, faculty, agency scientists, and researchers. Since its inception in 2006, the Discover Denali Research Fellowship has funded more than \$100,000 of research in the park.

Welcome to the Subarctic: The hour-long *Welcome to the Subarctic* presentation helps those preparing to travel into Denali National Park and Preserve on a Tundra Wilderness Tour. This hands-on lecture helps visitors make the most of their experience by introducing Denali's subarctic ecosystem.



“Inspiring Personal Connections to Denali”

Mission: To foster understanding and appreciation of Denali through informative and inspiring programs.

History: The Denali Education Center, formerly the Denali Foundation, was established in 1989 by the Denali Park Concessionaire and Denali National Park and Preserve Superintendent. These two were inspired to found a nonprofit that would serve as a research facility for biologists studying Denali’s unique ecosystem and would encourage them to share their expertise with other professionals, park visitors, and the local community. This vision helped fill the communication gap between biologists, resource managers, and the public. In November 1989, the Denali Foundation was incorporated as a 501(c)(3) nonprofit.

Throughout the 1990s, the Denali Foundation offered educational travel programs for visitors to Denali in partnership with Elderhostel (now Road Scholar). These programs brought people from all over the country to Denali National Park for six nights to study wildlife, natural history, and the intricate balance between preservation and use. This week-long intensive study in Denali was (and remains) an incredibly unique experience in a tourist area where most visitors stay only one or two nights. The program created ambassadors for Denali. As the need for education about wilderness and protected places became apparent, the Denali Foundation adopted it as the focus of the organization.

Today we serve our original purpose and an expanded education-centered mission. In 2007, we changed our name to the Denali Education Center and our mission became *to foster understanding and appreciation for Denali through informative and inspiring programs*. 2013 will be our 24th season offering Road Scholar programs. Over the last 15 years we have grown and diversified our program offerings to include summer camp programs for at-risk and developmentally challenged children, naturalist-led day programs for park visitors, and lectures, concerts, and workshops for the community. We continue to support park science through the Discover Denali Research Fellowship which funds studies of interest to park managers.

Denali Education Center Staff:

Executive Director	Jodi Rodwell
Operations Director	Jill Boelsma
Program Director	Kimber Burrows
Residential Program Director	Patty Burns

Denali Education Center Board of Directors:

Chairman	Greg LaHaie , <i>Owner, Kantishna Air Taxi, Denali Park, AK</i>
Vice Chair	Thom McAleer , <i>General Manager, Alaska Denali Travel, Anchorage, AK</i>
Secretary/Treasurer	Matthew Fitzgerald , <i>Area Manager, South/Central Washington, Wells Fargo Bank, Seattle, WA</i>
	Brent Fisher , <i>President, Board Advisor Firm, Anchorage, AK</i>
	Jersey Jones , <i>Sales and Marketing, Specialty Imports, Fairbanks, AK</i>
	Scott Kiersztyn , <i>Instructor, Tahoma Audubon, Tahoma, WA</i>
	Brett Navin , <i>English Professor, Columbus State Community College, Columbus, OH</i>
	Blair Schoenborn , <i>Student, MBA Sustainability, Duquesne University, Pittsburgh, PA</i>
	Mike Speaks , <i>International Adventure Travel, Denali Park, AK</i>
	Bonnie Westlund , <i>General Manager, Denali Princess Lodge, Denali Park, AK</i>

